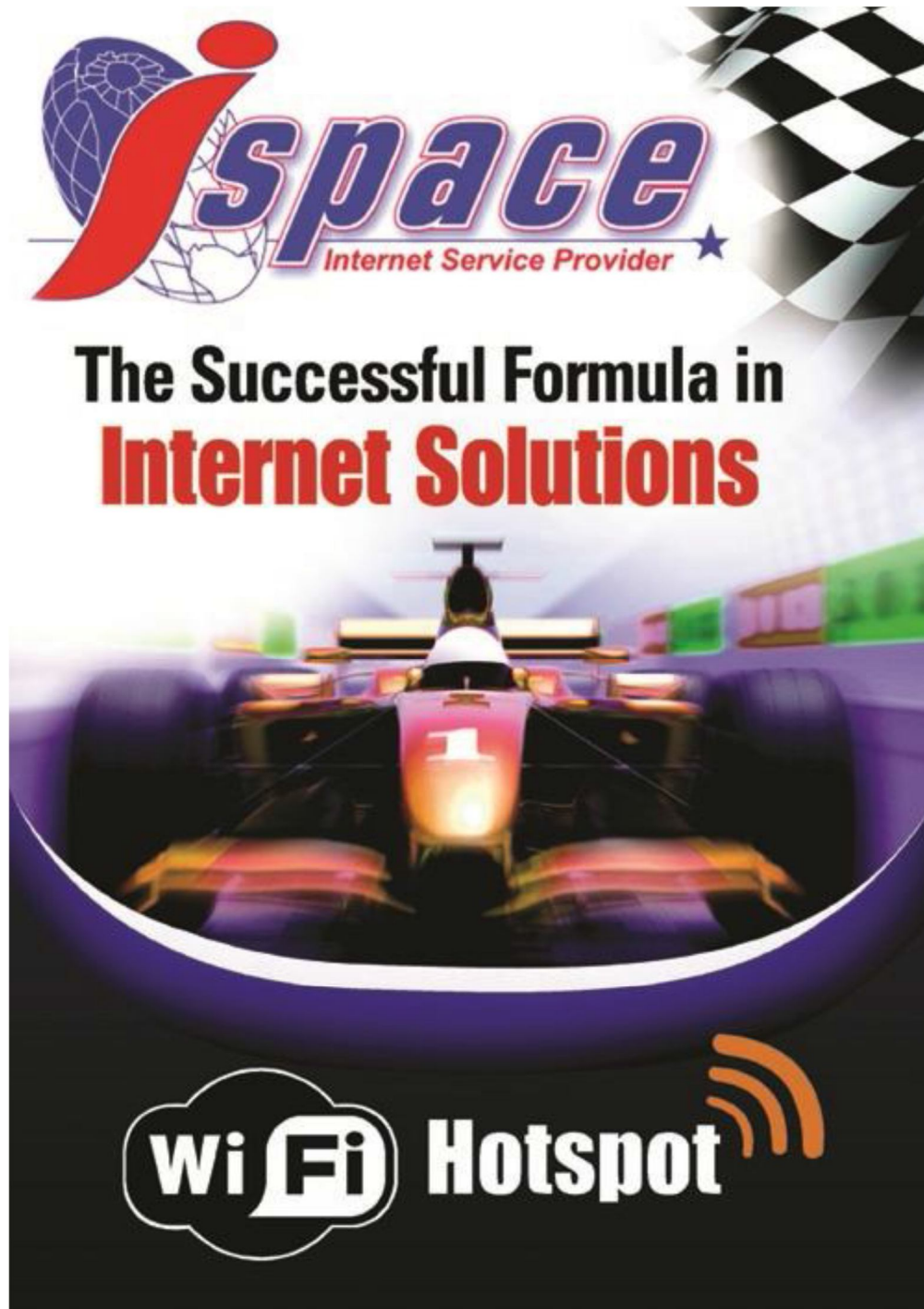
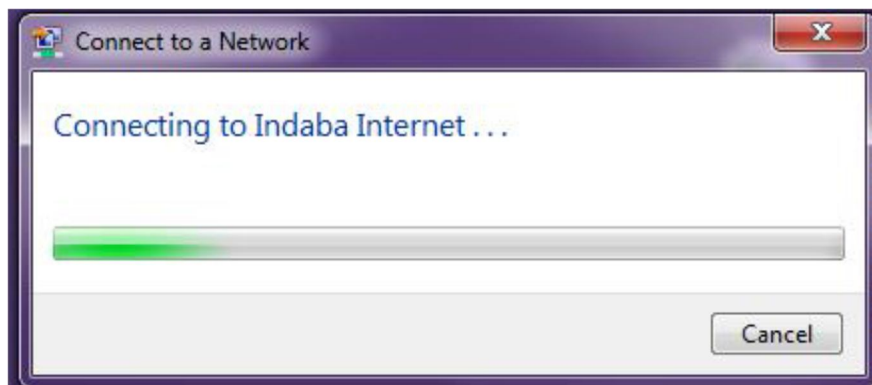


Wireless Internet Logon Guide



Wireless internet sponsored by iSpace

1. Connect to the Wireless Network called “Indaba Internet” as shown below. The password for this wireless network is “**iccdwifi**”

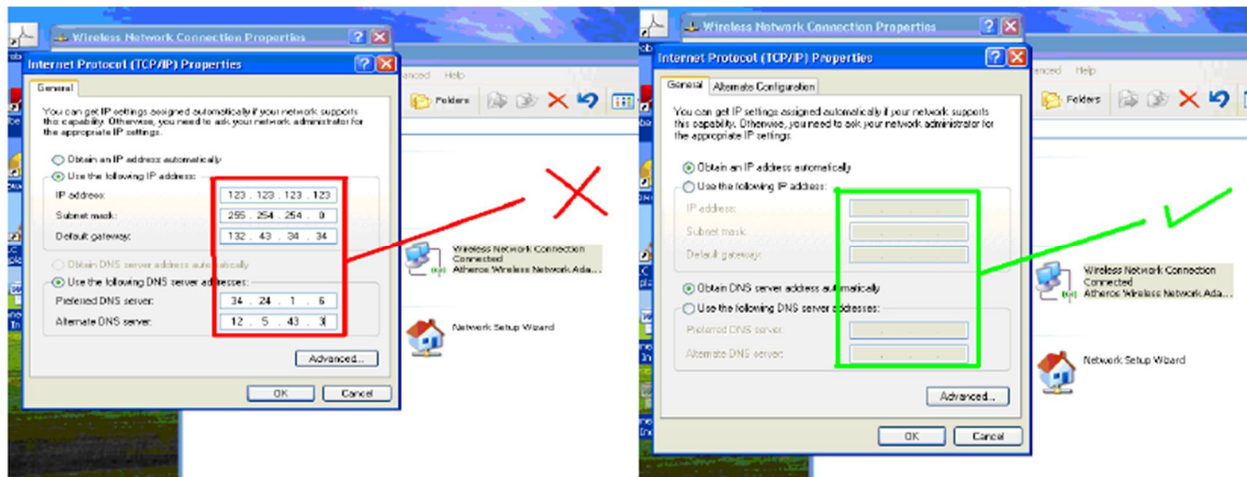


2. Once the password is entered, you should be able to successfully browse the internet.

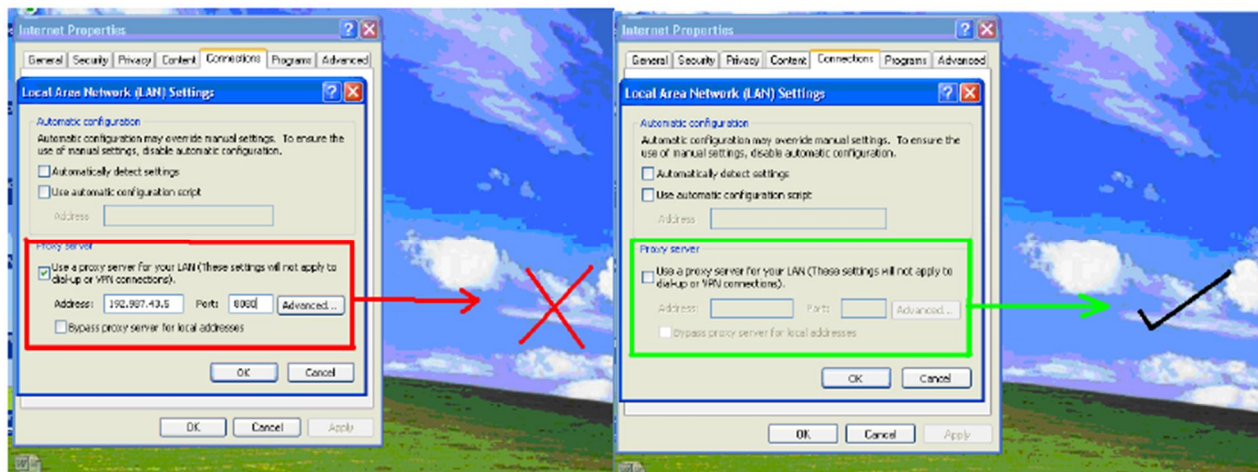
Troubleshooting

Should you experience any challenges browsing, below are some troubleshooting tips -
Remember to note any changes that you make to your settings so that you will be able to revert afterwards.

1. There should be no static IP address configured on the PC / Laptops wireless network Adapter.



2. Ensure that there is no proxy setting in your internet explorer options "tools, internet options, connections, LAN settings".



Disclaimer:

Use of the Indaba Wireless Guest Network is at your own risk. The Guest Network is not secured or encrypted. Guests should assume that all use could be monitored and that any information sent or received could potentially be intercepted. Sensitive personal information should not be transmitted over an unsecure network. ICC Durban assumes no responsibility and shall not be liable for any loss of data or damages caused by using the Guest Network to browse the Web and/or download materials from the Web.

Guests are expected to abide by Acceptable Use practices and should not:

- Use excessive bandwidth
- Release a virus or a worm that damages or harms a system or network
- Attempt to deliberately degrade performance or deny service
- Download, use or distribute copyrighted materials, including pirated software/music/videos/games

- Upload, download, distribute, or possess pornography of any nature
- Intercept or monitor any network communications intended for someone other than the user
- Attempt to circumvent security mechanisms

Note

Please ensure that your device is wireless enabled and working. The onsite support staff are not permitted to make any changes on a user's computer however are able to assist should you still experience difficulties in connecting.

The ICC Wireless utilizes a **best effort delivery**.

Best effort delivery describes a network service in which the network does not provide any guarantees that data is delivered or that a user is given a guaranteed quality of service level and priority. In a **best effort network** all users obtain best effort service, meaning that they obtain unspecified variable bit rate and delivery time, depending on the traffic load.